

TITLE: GERBER SOLARA Socket Error in ImageRIP Plus/Pro Software

Category: GERBER SOLARA/ImageRIP

Gerber FastFact #: 7015

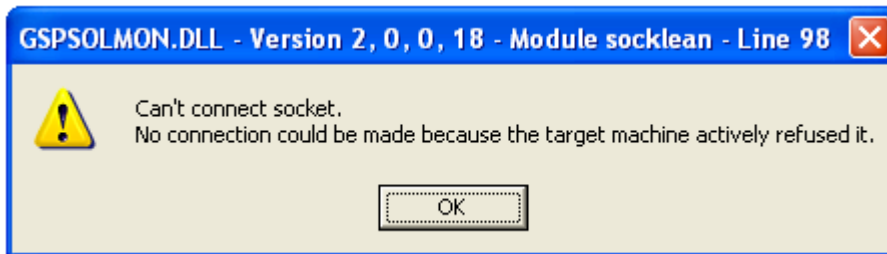
Supplied by: Technical Communications

Last Modified: 5/4/05

Summary: Explanation and workaround for the GERBER SOLARA Socket Error in ImageRIP Pro/Plus Software.

Problem

Attempting to queue a GERBER SOLARA™ job in ImageRIP Pro™ or ImageRIP Plus™ by Onyx AFTER a job has already begun printing and BEFORE that job finishes may result in an error. When a user moves a new job to the print queue while a job is printing, the new job may not print, and the following error may display:



After this error displays, the job can once again be moved to the print queue and printed.

Workaround

- The user should not place jobs in the queue while a job is printing on the GERBER SOLARA. The user must wait until the job has finished printing.
- The user can move multiple jobs to the print queue at one time when the printer is idle.