

# Gerber Tempo 600 Setup Manual and Quick Start Guide



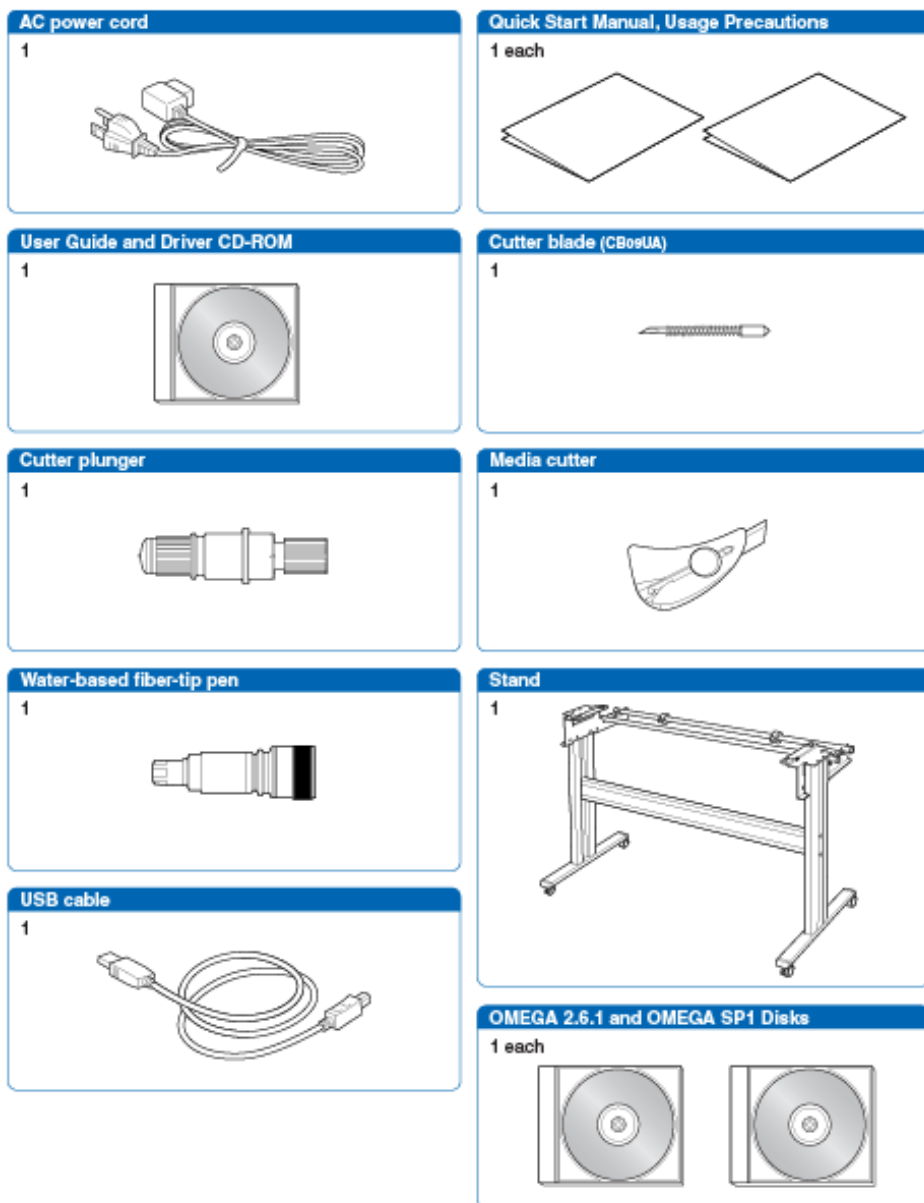
<b>Gerber Tempo 600 Setup Manual.....</b>	<b>2</b>
1. Check the shipment .....	2
2. Prepare the connection cable.....	3
3. Prepare the power source .....	3
4. Install the plotter driver .....	3
5. Installing Gerber Tempo 600 in OMEGA .....	7
6. Sending jobs to the plotter from GSPPlot.....	8
7. Installing Gerber Tempo as a Windows Printer .....	9
<b>Quick Start Guide.....</b>	<b>11</b>
1. Prepare the cutter blade and pen plunger.....	11
2. Mount the pen plunger .....	11
3. Load the media.....	12
4. Turn on the Tempo 600 .....	13
5. Select the media mode.....	13
6. Set the cutting conditions .....	14

# Gerber Tempo 600 Setup Manual

This manual describes the procedure required to setup the Gerber Tempo 600. The Gerber Tempo 600 Quick Start Guide begins on page 11. For details on the operation of the plotter, refer to the Gerber Tempo 600 Owner's Guide which is included on the Gerber Tempo 600 CD.

## 1. Check the shipment

- 1 Check the contents of the shipment.
- 2 In addition to the plotter, the following accessories are included in the shipment. Refer to the list and check the accessories.



## 2. Prepare the connection cable

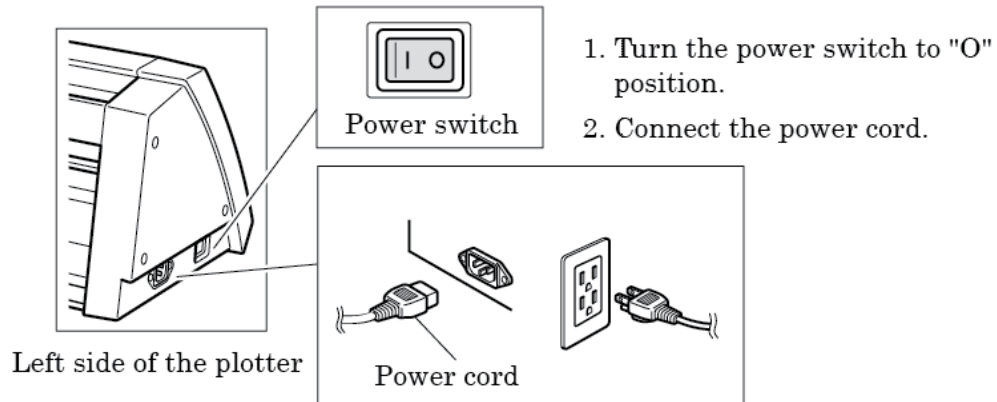
Connect the plotter to the computer using the USB cable.

## 3. Prepare the power source



*Note: Remove all transportation tape.*

- 1 Locate the power cord connection and power switch on the left side of the printer.
- 2 Plug the power cord into the plotter but do NOT connect it to the power source until instructed to do so during installation.



## 4. Install the plotter driver

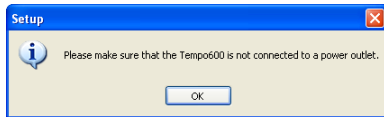
There are two sets of instructions for installing the plotter driver – Windows XP® or Windows Vista®. Follow the instructions that pertain to your computer's operating system.

Windows XP

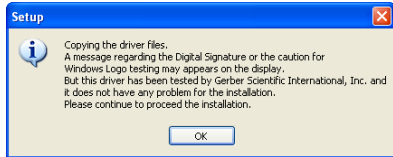
- 1 Insert the Gerber Tempo 600 CD into the computer drive.
- 2 Browse the CD to locate MultiSetup.exe and double click it to open the installation program.
- 3 Click the **Install Tempo 600 USB Driver** button.



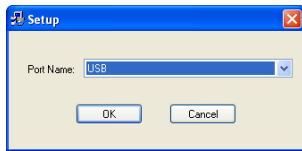
- 4 The screen displays the following message. Make sure the Tempo 600 is NOT connected to the power outlet.



5 Click **OK** and the following message displays.



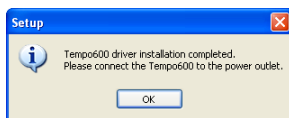
6 Read the message and click **OK**. The Port Name screen displays.



7 Choose **USB** from the drop down menu and click **OK**. The Windows warning displays.



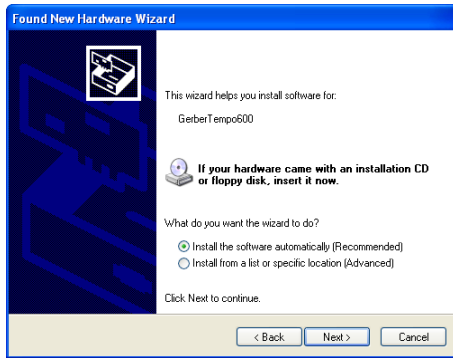
8 Click **Continue Anyway** to complete the driver installation.



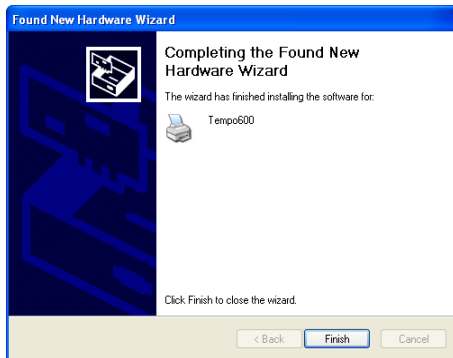
9 Click **OK**. Plug the Gerber Tempo 600 into the power source and turn on the power switch. The Found New Hardware Wizard displays.



10 Choose **No, not at this time** and then click **Next >**.



- 11** Choose **Install the software automatically (Recommended)** and click **Next >**. If the Windows warning displays again, click **Continue Anyway**.
- 12** When the Tempo 600 driver installation is complete the following screen displays. Click **Finish** to close the Wizard.

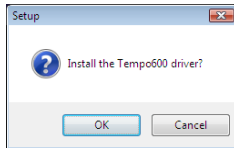


## Windows Vista

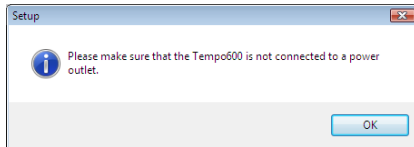
- 1** Insert the Gerber Tempo 600 CD into the computer drive.
- 2** Browse the CD to locate MultiSetup.exe and double click it to open the installation program.
- 3** Click the **Install Tempo 600 USB Driver** button.



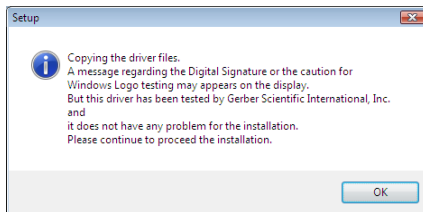
- 4** The confirmation message displays. Click **OK** to begin driver installation.



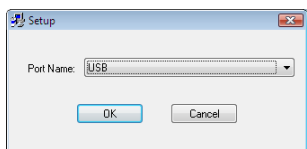
- 5 The screen displays the following message. Make sure the Tempo 600 is NOT connected to the power outlet.



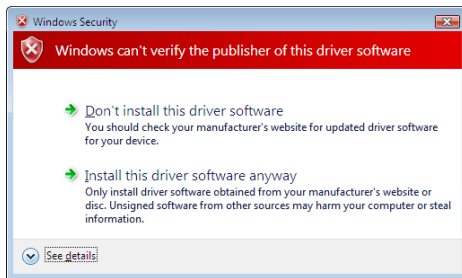
- 6 Click **OK** and read the following message about Digital Signatures.



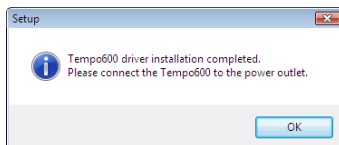
- 7 Click **OK**. The following screen displays.



- 8 Choose **USB** from the Port Name drop-down menu and click **OK**. The following warning displays.




- 9 Click **Install this driver software anyway** and when the driver installation is complete the following message displays. You can now connect the Gerber Tempo 600 to the power outlet.

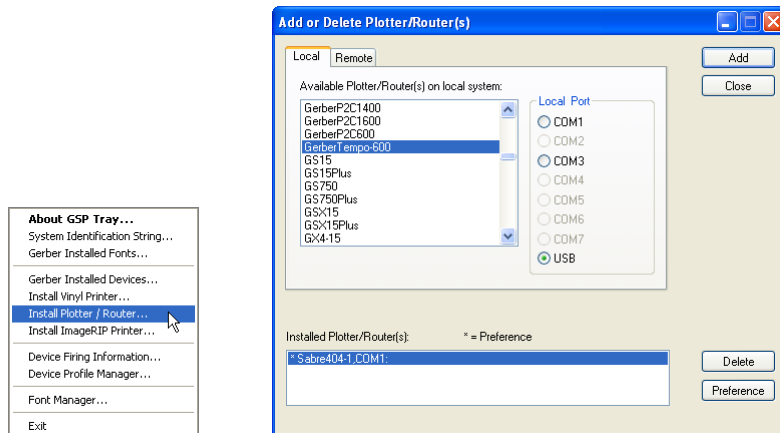


## 5. Installing Gerber Tempo 600 in OMEGA

To install the Gerber Tempo plotter for use with OMEGA™ software you must first install OMEGA 2.6.1 and then install OMEGA SP1. Follow the README instructions included with the disks.

### ➤ To install the Gerber Tempo 600 in OMEGA

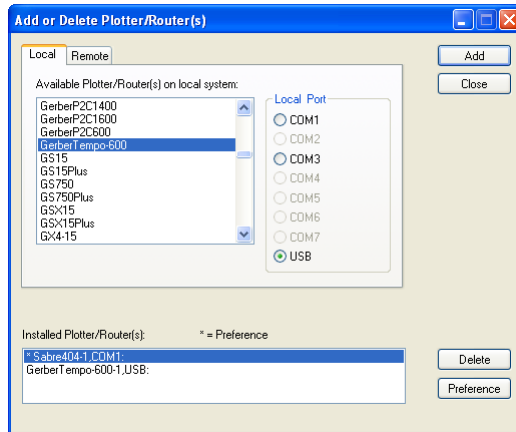
- 1 Install Gerber OMEGA 2.6.1.
- 2 Install Gerber OMEGA SP1.
- 3 Right click the GSPTray icon  located in the bottom right corner of the Windows task bar.
- 4 From the displayed menu choose **Install Plotter/Router** and the Add or Delete Plotter/Router dialog box displays



- 5 Choose **GerberTempo600** from the list of available plotters.
- 6 Select **USB** for the Local Port and click **Add**. The Add - Name Device dialog box displays.



- 7 Accept the default name for the plotter or enter your own name and click **OK**.
- 8 The Gerber Tempo 600 is installed in OMEGA and the name appears in the Installed Plotter/Router list. You can select GerberTempo600 from the list and click Preference to make the Tempo your default plotter. Click **Close** when you are finished.

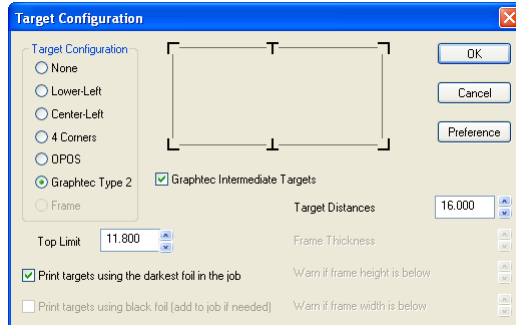


## 6. Sending jobs to the plotter from GSPPlot

You can send a cut-only job from GSPPlot to the Gerber Tempo 600, or if you have created a print/cut job, print Graphtec Type 2 (right angle) targets using the GERBER EDGE® and the Gerber Tempo can automatically acquire them.

### ➔ To print Graphtec Type 2 targets

- 1 In GSPPlot, open the print/cut job.
- 2 Click Setup > Print Options to open the Print Options dialog box.
- 3 Click Targets to open the Target Configuration dialog box.



- 4 Turn on Graphtec Type 2 targets to print right angle targets in the four corners.
- 5 Optionally, turn on Graphtec Intermediate Targets to add extra targets along the edge of the graphic.
- 6 Click OK.
- 7 Print the job with the Graphtec Type 2 targets on the GERBER EDGE.

### ➔ To send jobs to the Gerber Tempo 600 from GSPPlot

- 1 Open a cut-only or print/cut job in GSPPlot.
- 2 Click Setup > Device Select and choose the Gerber Tempo 600 and click OK.
- 3 Click Cut/Pounce to send the job to the plotter.

## 7. Installing Gerber Tempo as a Windows Printer

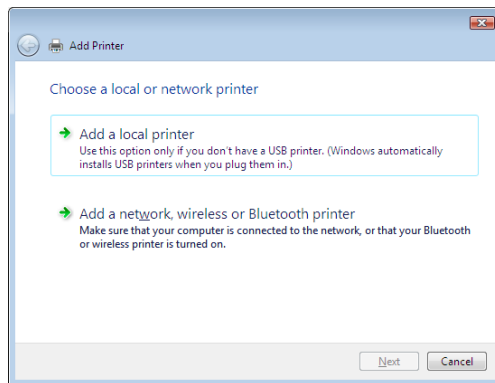
It is not necessary to install the Gerber Tempo as a Windows printer to send jobs from OMEGA. Installing the plotter through Windows gives you additional flexibility to use the plotter from other programs such as Adobe Illustrator®.



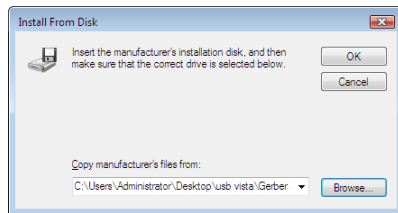
*Note: The following instructions are for Windows Vista.*

### ➔ To install the Gerber Tempo using the Windows Add Printer Wizard

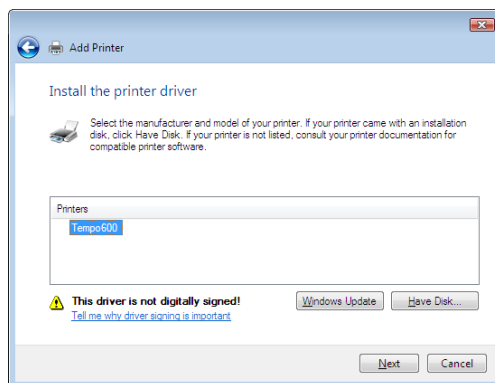
- 1 Click Start > Control Panel > Hardware and Sounds > Printers. Click **Add a printer** to display the wizard.



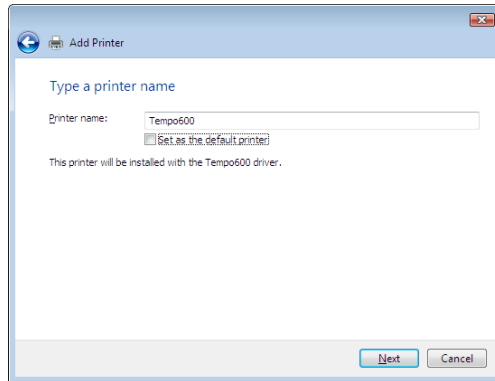
- 2 Choose **Add a local printer**, and then click **Next**.



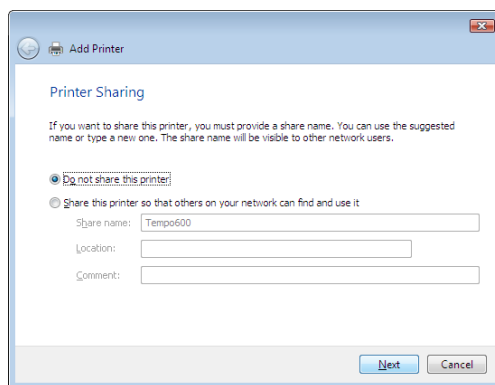
- 3 Browse to the location of the driver, and then click **OK**.



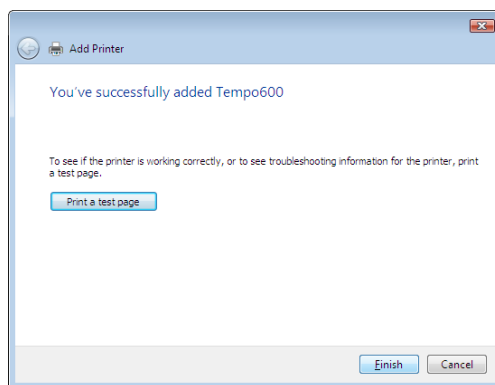
- 4 Select **Tempo600** from the list of Printers, and then click **Next**.



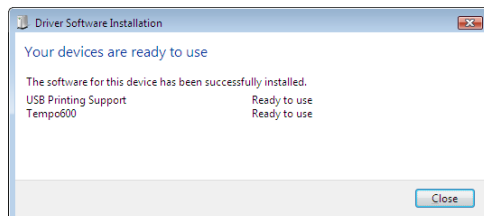
- 5 Enter **Tempo600** as the printer name. Do NOT turn on **Set as the default printer**. Click **Next**.



- 6 In the Printer Sharing dialog box, choose **Do not share this printer** and click **Next**.



- 7 When the installation successful message displays click **Finish**. Do not attempt to print a test page. The following "devices are ready to use" message displays.



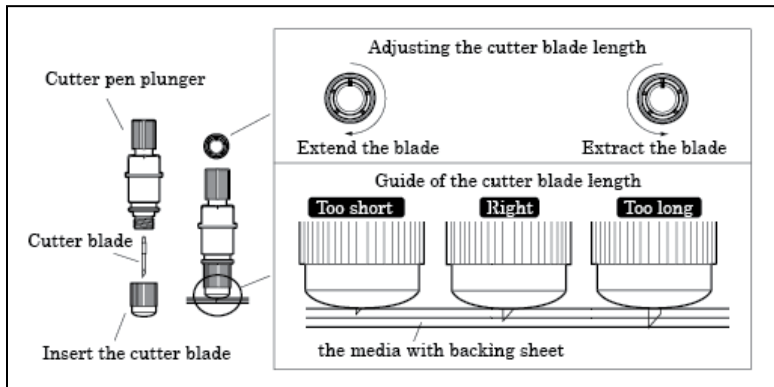
# Quick Start Guide

The Gerber Tempo 600 Quick Start Guide is a handy reference to the basic operation of the plotter. For detailed information and instructions, see the Gerber Tempo 600 Owner's Manual.

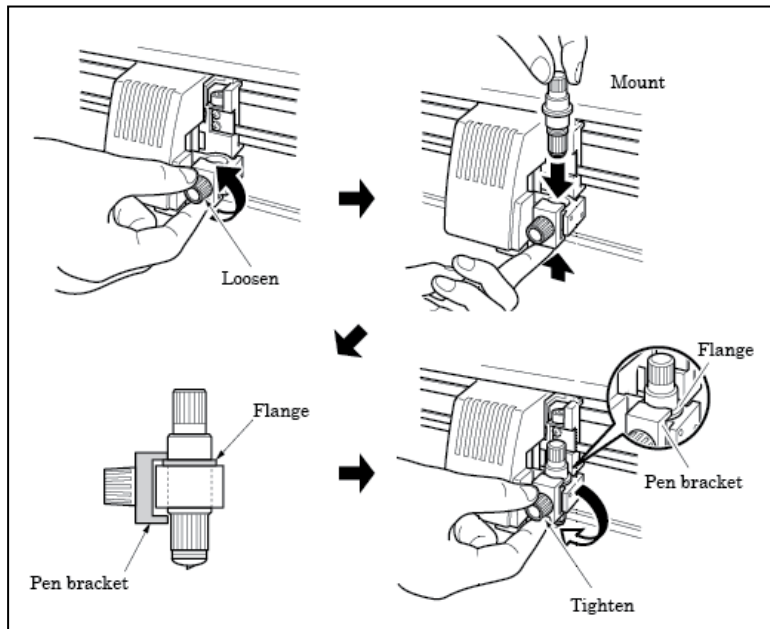
## 1. Prepare the cutter blade and pen plunger



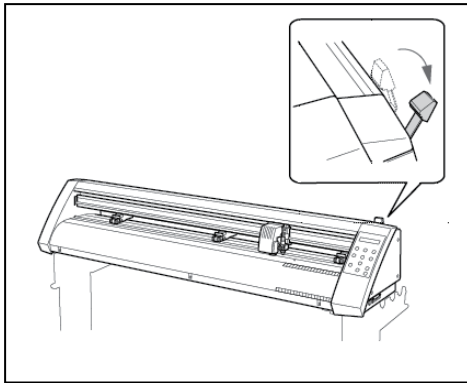
**CAUTION:** Cutter blades are extremely sharp. Handle them with care.



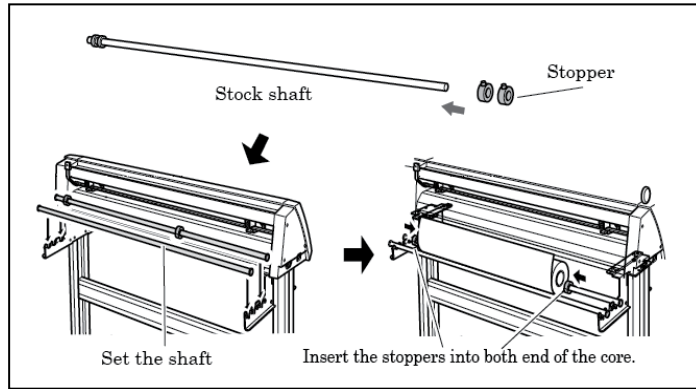
## 2. Mount the pen plunger



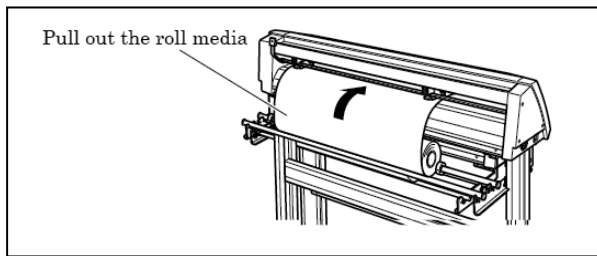
### 3. Load the media



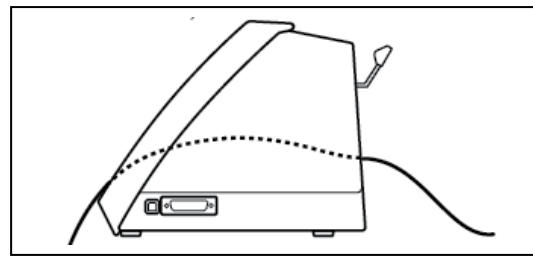
3.1 Lower the set lever.



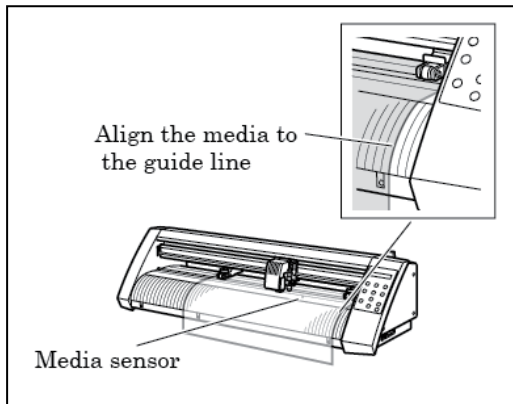
3.2 Installing media on the roll media stand.



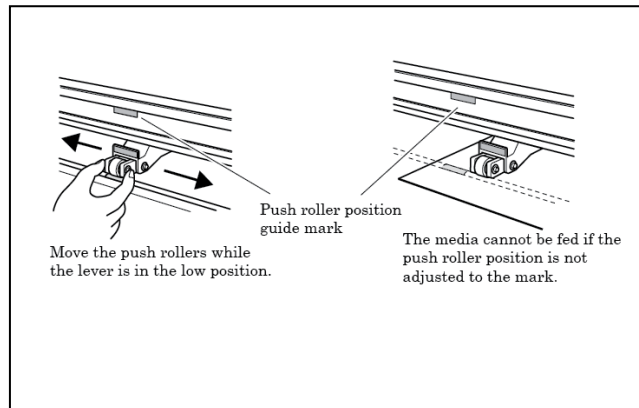
3.3 For roll media, pull out the media and pass through the plotter.



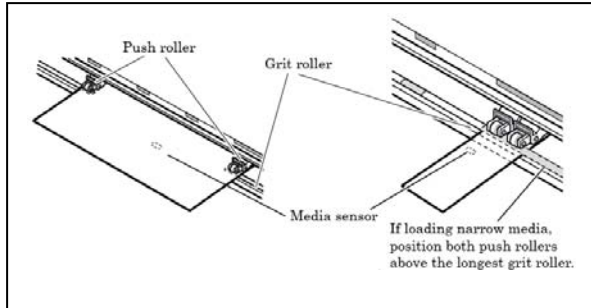
3.4 For sheet media, pass through the plotter as shown.



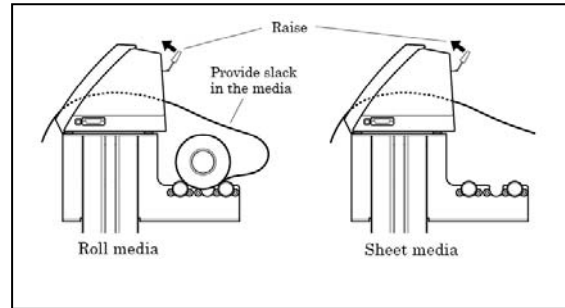
3.5 Align the media to the guide line.



3.6 Adjust the push rollers to the guide mark.

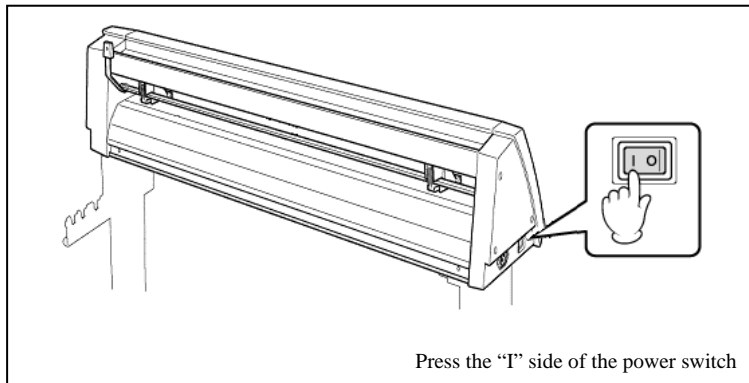


3.7 Media should cover the media sensor.





3.8 Adjust the media as necessary.

#### 4. Turn on the Tempo 600





Press the "I" side of the power switch

#### 5. Select the media mode

Select media mode using arrow keys.

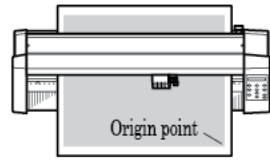




Press the ENTER key to start media size detection.

When using a sheet media.

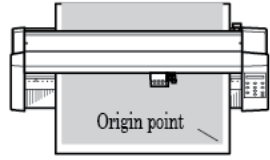
SHEET PRESS ENTR



Origin point

When using a roll media and setting the origin point to the top of media.

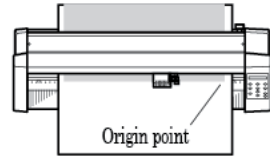
ROLL1 PRESS ENTR



Origin point

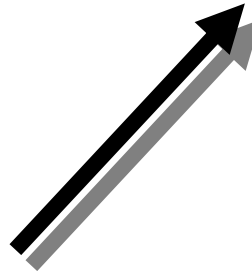
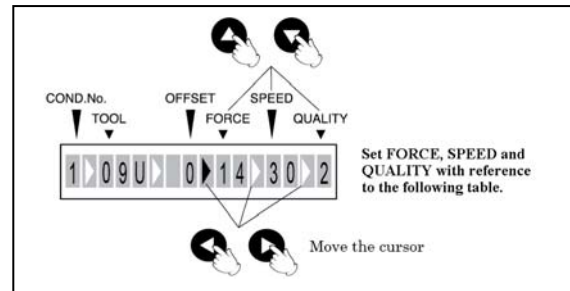
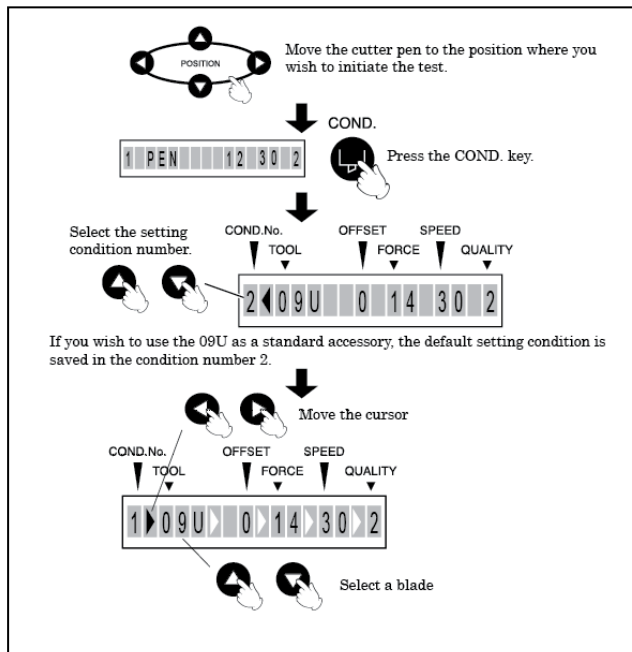
When using a roll media and setting the origin point to the current setting position.

ROLL2 PRESS ENTR



Origin point

## 6. Set the cutting conditions



### Typical settings

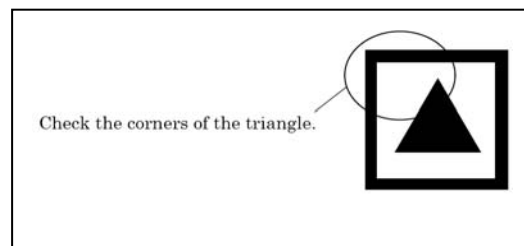
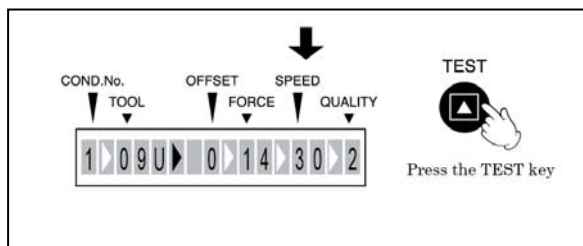
Material	Thickness (mm)	Blade	Cutting Force	Speed	Quality
Outdoor vinyl	0.05 to 0.08	CB09UA	10-14	1-30	2
↑ (for small size character cutting)	0.05 to 0.08	CB15UB	10-14	1-20	1
Film for decoration	0.08 to 0.1	CB09UA	14-17	1-30	2
Transparent/Translucent film	0.08 to 0.1	CB09UA	14-20	1-30	2
Reflective film	0.08 to 0.1	CB09UA	14-20	1-30	2
Fluorescent film	0.20 to 0.25	CB09UA	20-21	1-20	1
Fluorescent film	0.20 to 0.25	CB15U	20-21	1-20	1



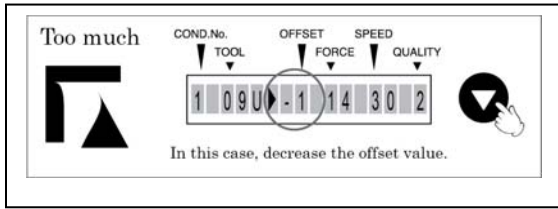
Note: Adjust the cutting force so that the cutting trace lightly appears on the media liner, but the blade does not cut through the liner.



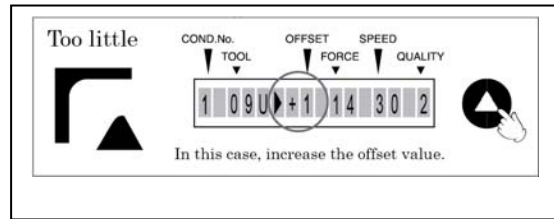
**CAUTION:** Be sure to keep your hands, hair and face away from the moving parts of the plotter.



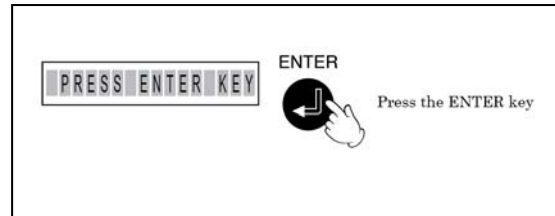
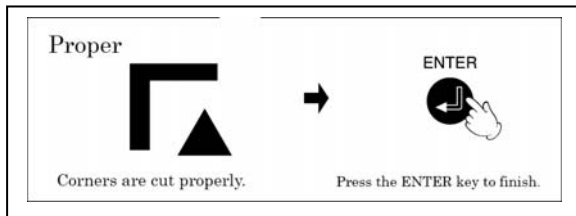
6.1 Enter the Condition number, Tool, Force, Speed and Quality settings. Offset will be addressed in the next steps.



6.2 Press Test to cut the test pattern and examine the corners.



6.3 Enter the offset value and repeat testing and adjustment until the corners are cut properly.



6.4 Press the ENTER key to save the setting conditions in the plotter's memory.