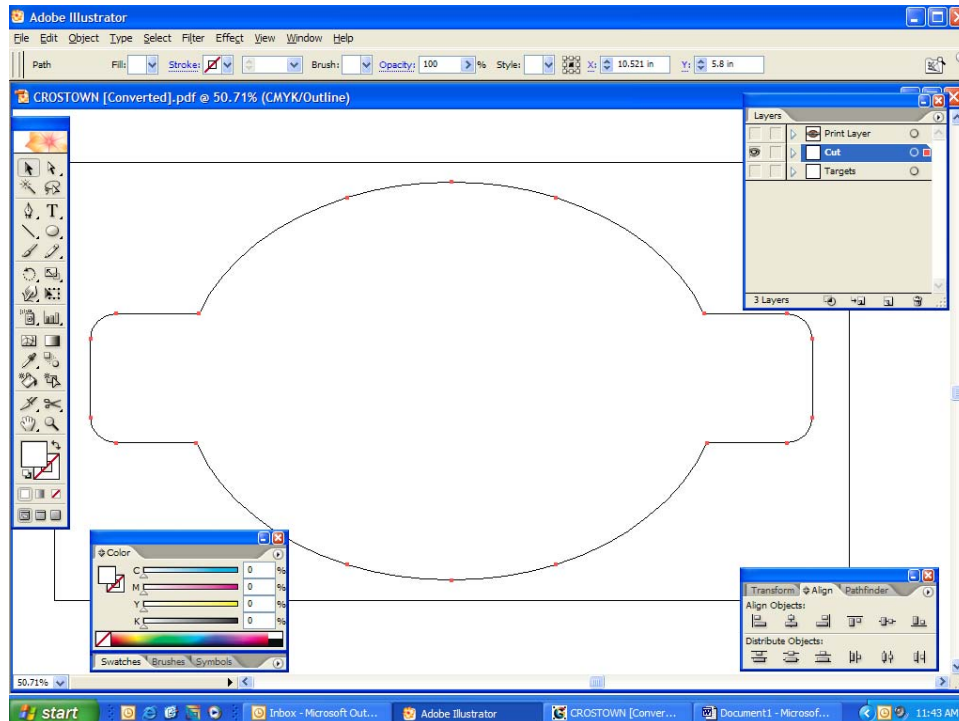


## Preparing GerberCUT files in Adobe Illustrator (Manual Placement)

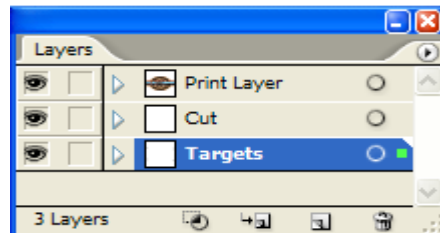
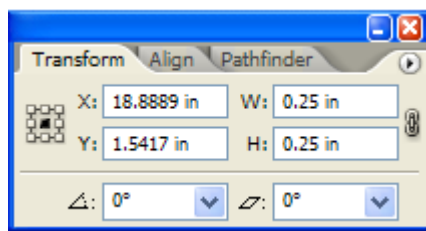
GerberCUT software uses layers to define targets and tools for contour cutting printed jobs on rigid materials. To use GerberCUT, you should be familiar with working in layers in your design program.

### From Adobe Illustrator (CS2) – Manual Target Placement

1. Cut data should be on its own layer.



2. Vector Cut line must have a fill. If you do not want a color to print, then make the fill with all CMYK values of 0.
3. Graphic should be sized to final output size before adding targets.
4. Create a new layer named Target. On this layer make .25” black circles and place around the outside of the printed graphic.

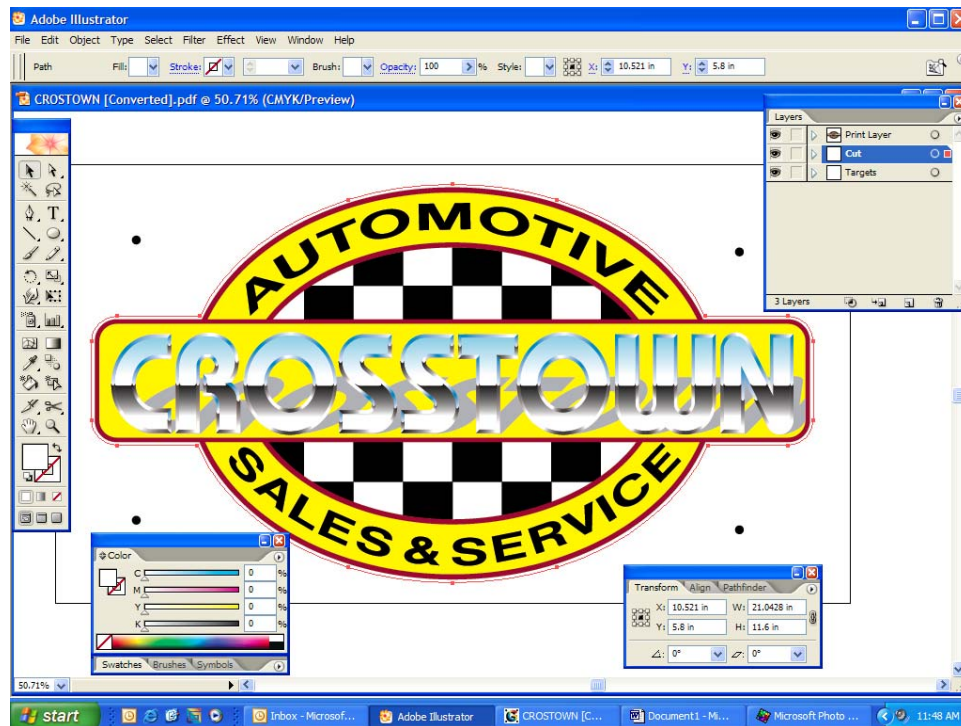


5. All of your Targets must be on the Target layer.

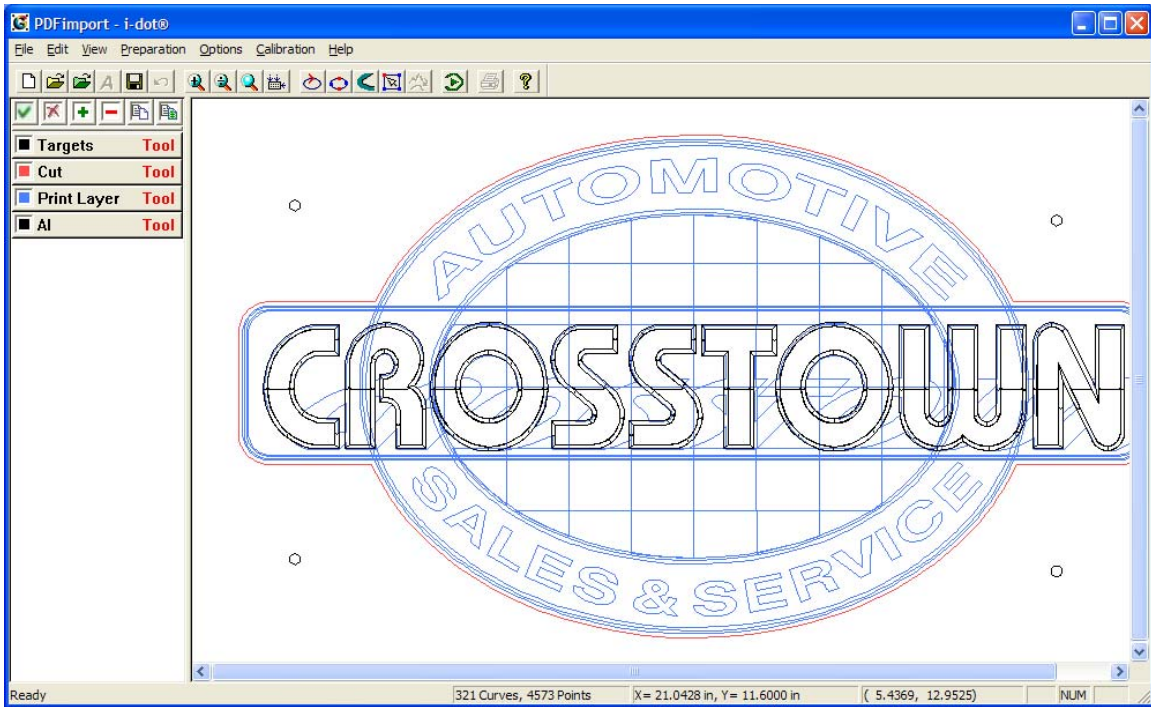
*If your printed area is dark, the targets can be a white 1/4" circle against the background or you can make a white 1/4" circle in the center of a black square.*



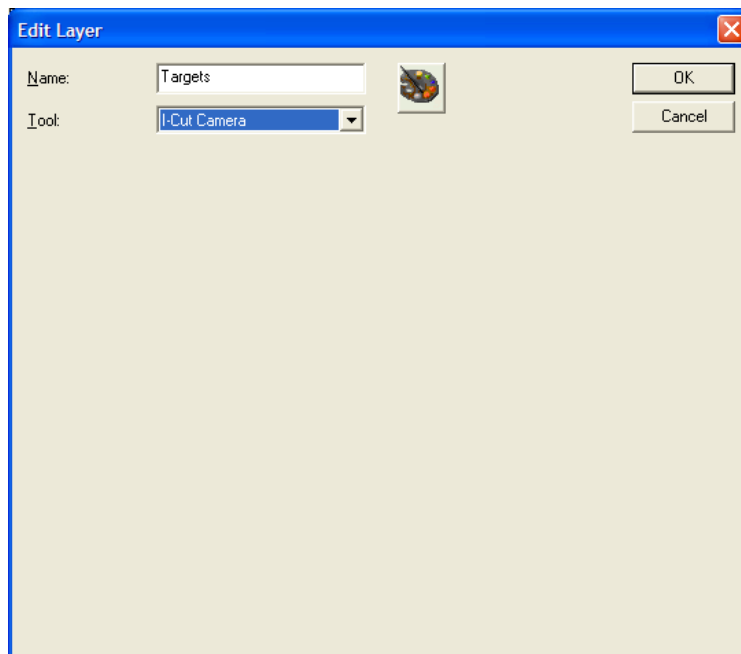
6. For Printing to your large format printer, save file as either an EPS, PDF, or TIF.



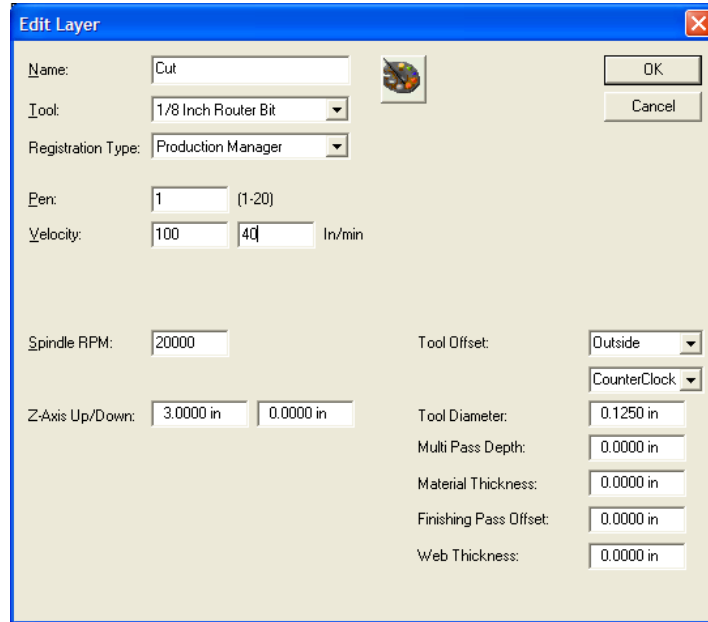
7. Print file to your printer. Be sure to include print information as well as targets when you print.
8. For cutting, save the file as either an AI or PDF file. This cut file only needs to have the targets and the vector cut line in it. If you wish, you can delete the print data to avoid confusion in GerberCUT software and make for a smaller cut file.
9. Import the PDF or AI file into GerberCUT by clicking on the green folder in GerberCUT.



10. You can delete any unnecessary print layers by selecting the layer and clicking on the “-“ button. GerberCUT only requires the Target layer and Cut Layer.
11. If Target layer is not at the top of the list. Click and drag it to the top.
12. Double click on the Target Layer and choose I-Cut Camera as the tool and click OK.



13. Double click on Cut Layer, Choose your tool and assign cut parameters based on the type of material you are cutting and click OK



14. If you do not assign a tool to a layer GerberCUT will ignore that layer.

15. Select the layers you wish to Output and click on run.