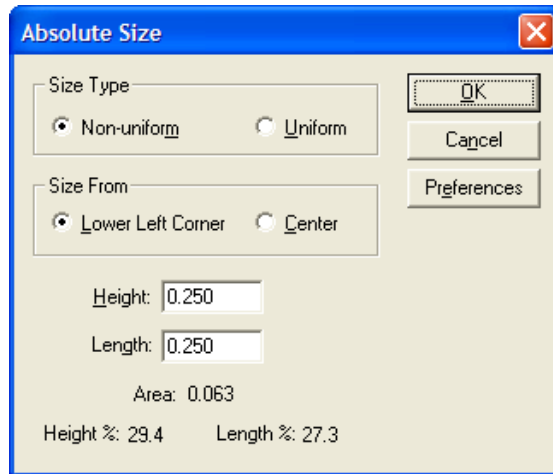
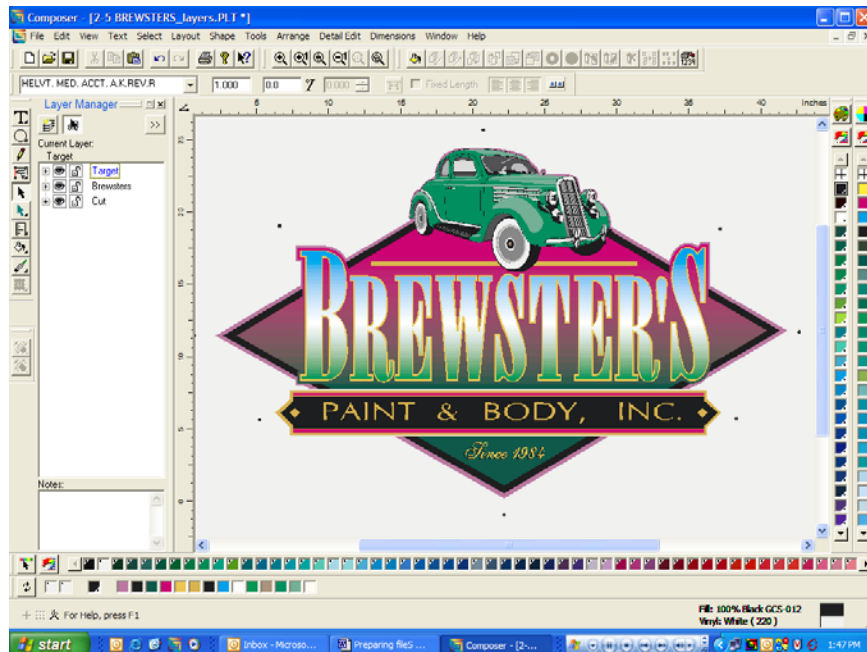


Preparing GerberCUT files in Omega

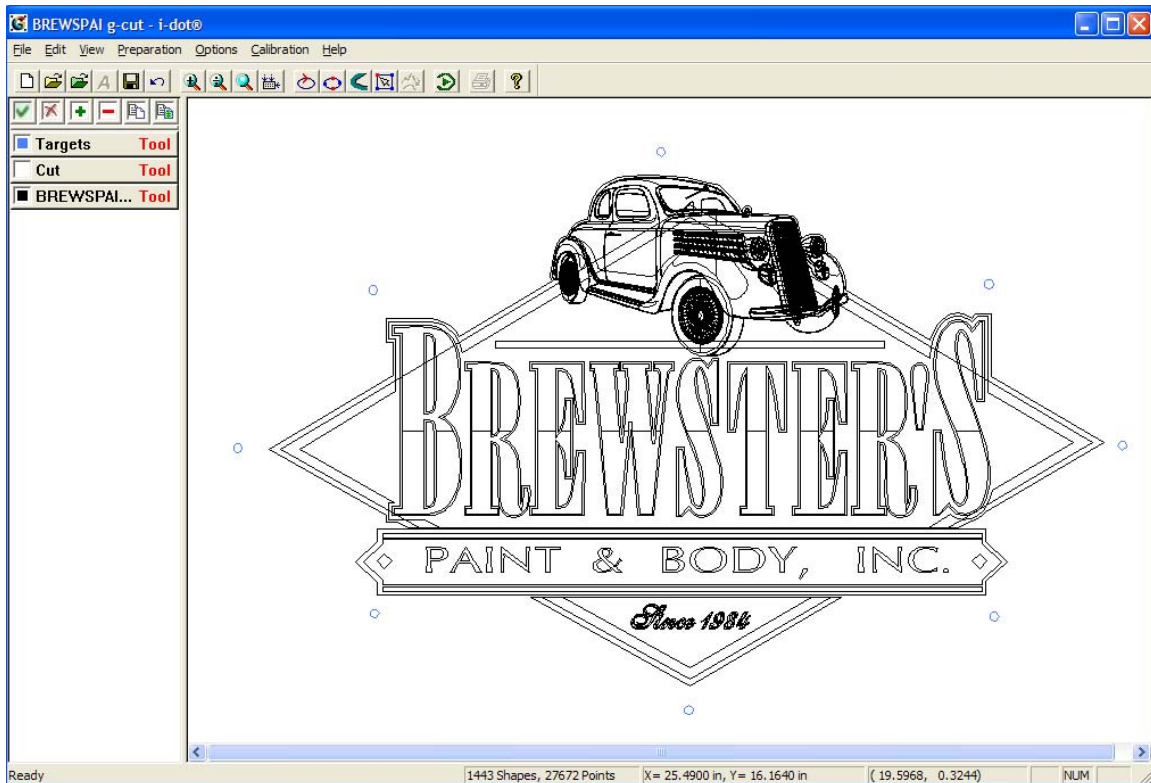
1. Cut data should be on its own layer.
2. Targets need to be on their own layer.
 - a. Targets need to be ¼" black circles and should be placed around the outside of the image to be cut.
 - b. Be sure you have chosen the Target layer
 - c. Make a circle, size by going to shape and absolute size



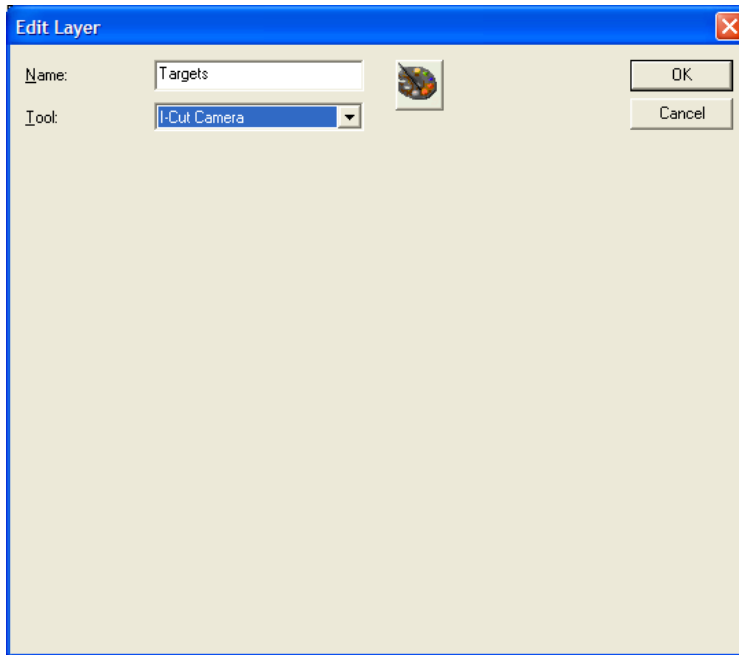
- d. Copy circle and place around the outside of the cut line by right clicking and choosing past here.



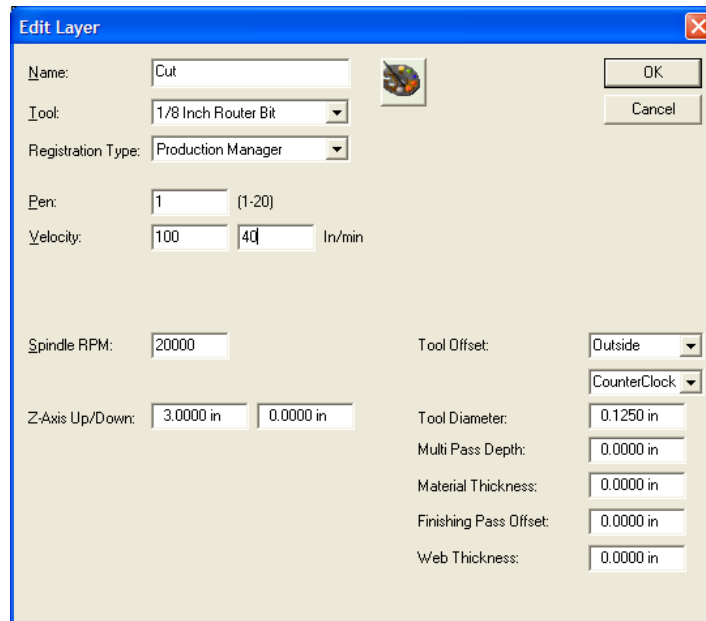
3. For Printing to your large format printer, save file as an EPS, PDF, or TIF.
4. Print file to your printer. Be sure to include print information as well as targets when you print.
5. For cutting, save the file as either an AI or PDF file. This cut file only needs to have the targets and the vector cut line in it. If you wish, you can delete the print data to avoid confusion in GerberCUT software and make for a smaller cut file.
6. Import the PDF or AI file into GerberCUT by clicking on the green folder in GerberCUT.



7. You can either ignore delete any unnecessary print layers by selecting the layer and clicking on the "-" button. GerberCUT only requires the Target layer and Cut Layer.
8. If Target layer is not at the top of the list. Click and drag it to the top.
9. Double click on the Target Layer and choose I-Cut Camera as the tool and click OK.



10. Double click on Cut Layer, Choose your tool and assign cut parameters based on the type of material you are cutting and click OK



11. If you do not assign a tool to a layer GerberCUT will ignore that layer.

12. Select the layers you wish to Output and click on Run.