

GERBER EDGE FX™

UNSURPASSED VERSATILITY,
PERFORMANCE, AND RELIABILITY



Endless Possibilities

EDGE READY™ Materials and GerberColor™ foils offer the widest range of applications in the business. Print spot, metallic, and process color to self-adhesive, magnet, holographic, reflective materials, and more.

From window, floor, and vehicle graphics to promotional novelties, POS displays, and decals, the opportunities to turn your sign making and specialty graphics business into a high profit center are unlimited.



VEHICLE GRAPHICS

Extreme durability. Sensational impact. Text alone simply can't compete. Just print, contour cut, and apply.



MULTI-COLORED LOGOS & TEXT

Why cut, weed, and assemble one color at a time? Print them all on a single layer of vinyl, contour cut, and apply.



CUSTOM STRIPING

Create shaded, multi-colored, even prismatic and holographic effect striping. Hundreds of applications.



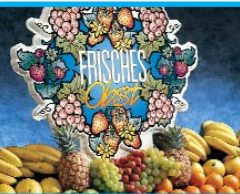
MENU BOARDS

Looks great. Takes minutes. Print small text direct to vinyl and apply, no weeding. You literally save hours.



MURALS

Decorative wall applications? Don't worry about the length. The EDGE FX doesn't.



SAMPLE PACKS & POP DISPLAYS

Make eye-popping POP material and mock-ups quickly and easily.



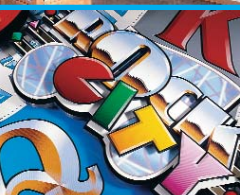
SHELF EDGING

Maybe it's decorative. Maybe it's promotional. It's up to you. The EDGE FX does both.



EXHIBITION GRAPHICS

A sea of text in minutes. Pictures in full color. Print reams of tiny text or complex line illustrations—ideal for exhibit identification.



DECORATIVE & DIMENSIONAL TYPE

The effects are stunning. Add value, prestige, and class with touch button simplicity and speed. The EDGE FX makes decorative letter faces.

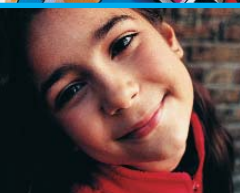


PHOTO ENLARGEMENTS

Scan photographs. Combine with text and print immediately. Big sizes? No problem with auto-tiling.



DIRECTORY GRAPHICS

Print on self-adhesive vinyl and apply. Much faster than cutting and weeding and the results are stunning.



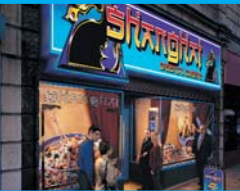
BANNERS

Get your share of the air. Color, text, and pictures bring banners to life.



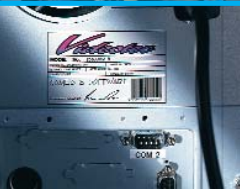
FLOOR GRAPHICS

Not even the sky's the limit with the EDGE FX. Floor graphics are a walkover.



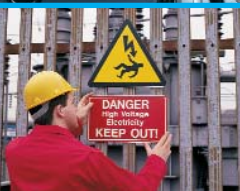
WINDOW GRAPHICS & FASCIAS

Produce head-turning window graphics and backlit signage that's impossible to ignore.



INDUSTRIAL GRAPHICS

Reverse print onto the back of clear material for long lasting instrument panels and machine labels.



SAFETY & WARNING SIGNS

Don't keep an expensive inventory of safety signs. Make them as you need them, even one-offs.



SELF-ADHESIVE LABELS & DECALS

Make instant, contour cut labels. Automatic sequential numbering? No problem. If you've got an EDGE FX.



PROMOTIONAL NOVELTIES

Print and contour cut magnetic sheeting for a whole range of promotional novelties that sell.

PLUS...

- Emblems, badges, and crests
- Film positives
- Decorated vacuum forming

**TO LEARN MORE, CONTACT
YOUR DISTRIBUTOR TODAY OR
CONTACT US AT 800.222.7446.**

The GERBER EDGE FX is a digital printing solution that is ideal for any business which creates outdoor signage, indoor displays, and other specialty graphics. EDGE FX's exceptional color and material range provides unsurpassed versatility, accommodating a wide range of applications in a single, affordable printing and contour cutting system.



Thermal transfer printing technology

**GerberColor SpectraTone Color
Matching System**

Advanced GerberColor FX Foil System

Unique EDGE READY Materials

Optimized design for ease of use

Compact, small footprint

Total print and cut solution available

Robust design / Made in the U.S.A.



A Gerber Scientific Company

83 Gerber Road
South Windsor, Connecticut 06074 USA
860.643.1515 800.222.7446
www.gspinc.com