



## Printing Double-sided, Full-bleed Sign Blanks with the Gerber Solara ion™

In this procedure you will learn how to print an 18" x 24" (457.2mm x 609.6mm) double-sided, full-bleed sign blank with the Gerber Solara ion.



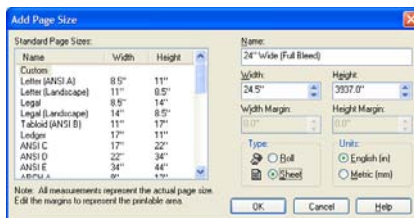
### Step 1:

Determine the exact 0,0 location on the table by printing 1/8" (3.2mm) lines on the table using the "00 reference line 35 inch.eps" file. After printing, apply masking tape to the table surface beyond the printed line outside the print area.



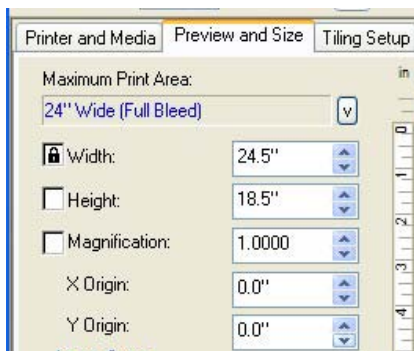
### Step 2:

Measure the sign blank to make sure that you know the exact width of the media. In this example the media is exactly 24" (609.6mm). Using the wrong media width can result in the print being off-center on the media.



### Step 3:

In Onyx RIP-Queue, click on Configure Printer. On the Page Sizes tab, click Add to create a new page size. In this example the page width entered is 24.5" (622.3mm) to allow for a 0.25" (6.35mm) bleed.



### Step 4:

Either in Onyx or in your design program, resize the job by 0.5" (12.7mm). So an 18" x 24" (457.2mm x 609.6mm) job would be resized to 18.5" x 24.5" (469.9mm x 622.3mm) to allow the printing to go beyond the blank.



### Step 5:

Place the sign blank of the table, leave a gap of half of the distance that you oversized the graphic. In this case, the gap is 0.25" (6.35mm) on the top and right side of the print.



### Step 6:

Using the new page size, send the job to print. For this job, right justification was chosen in Onyx RIP-Queue. Depending on the job you may want to use left, center, or right justification in Onyx.



*Tip: When using Center justification, the media size must be accurately measured or the job will print off-center.*



### Step 7:

When the first side is complete, flip the job over left to right (if the top of the job is located at the front of the printer). Place the sign blank in the same location as the first side. There should be ink on the table outlining exactly where to place the blank for side two.



### Step 8:

After printing, carefully clean the ink build up off the table by using a razor blade. It should lift off easily. Spray the area with isopropyl alcohol and wipe it clean. Remove the ink from the table promptly. The longer the ink remains on the table, the stronger it adheres, and the more difficult it can be to remove.



*Tip: Masking tape can be placed on the table around the sign blank to prevent ink from accumulating on the table.*